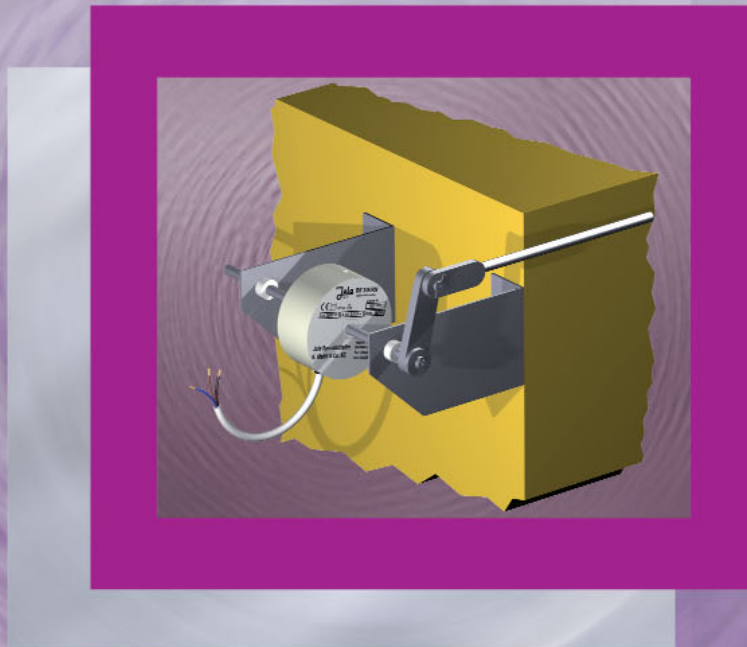


**RK**  
**external-mounting**  
**limit switches**  
with ball-operated microswitch

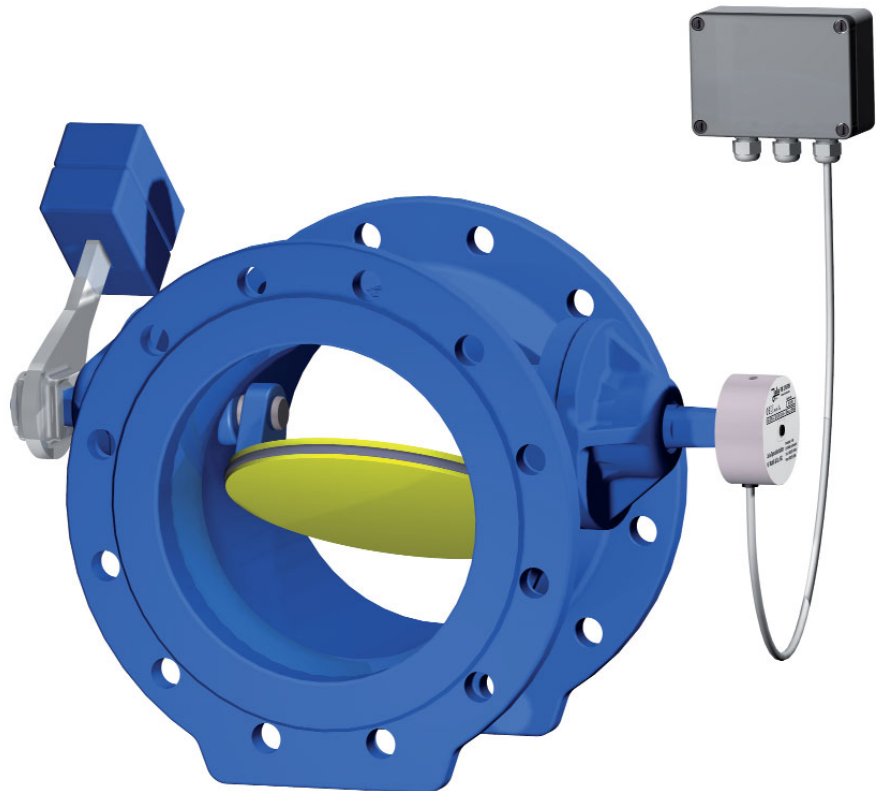


**Jola Spezialschalter K. Mattil & Co. KG**  
Klostergartenstraße 11-20 • D-67466 Lambrecht (Pfalz)  
P.O.B. 1149 • D-67460 Lambrecht (Pfalz)  
Phone +49 6325 188-01 • Fax +49 6325 6396  
kontakt@jola-info.de • www.jola-info.de



# RK 3/K/... external-mounting limit switches

## Example of application



## Application range, mounting and mode of operation of the RK 3/K/... limit switches

The RK 3/K/... limit switches are particularly suitable where the use of conventional limit switches is questionable because of severe working conditions, e.g. in damp or dirty environment.

The mounting of the RK 3/K/... limit switches has to be effected via a through hole situated in the middle of the body of the switch.

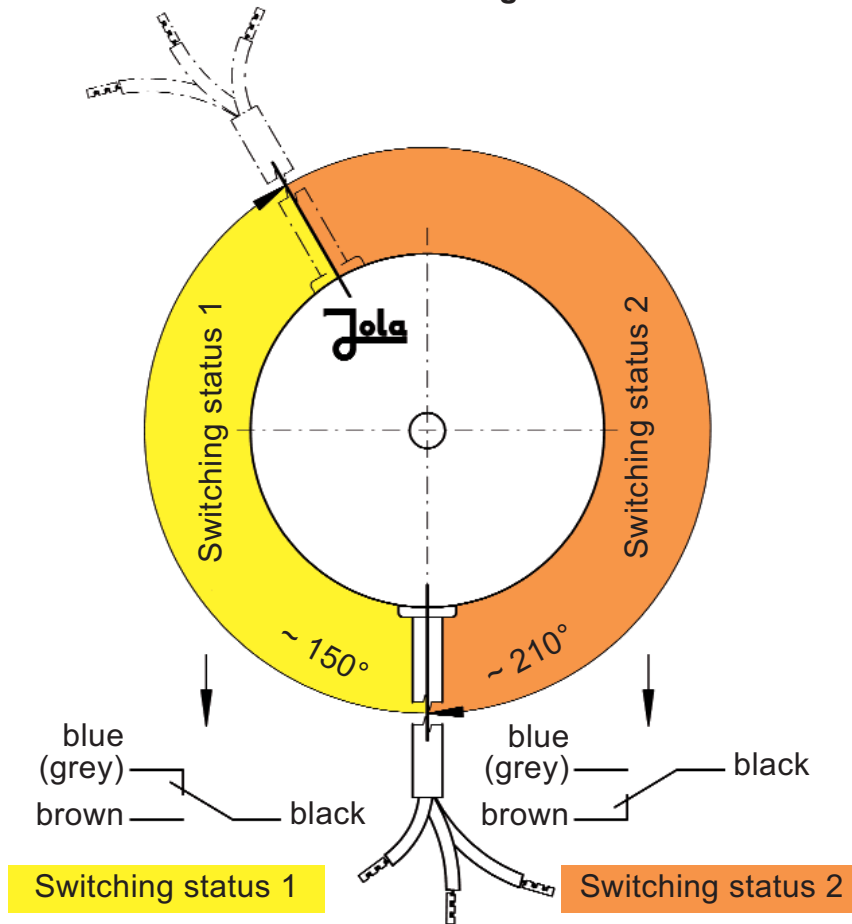
Through this hole, the limit switch has to be mounted on a horizontal shaft of the customer's device which permits a rotation of max.  $\pm 180^\circ$ . The rotation of the shaft causes the switching. In order to prevent an incorrect functioning of the limit switch and a cable break, a sufficient cable length must be left. After the limit switch has been set on the shaft, it has to be fixed by the screw placed inside the body of the switch.

The RK 3/K/... limit switches have as switching element a ball-operated microswitch (changeover contact). Representation of the switching: see page 21-1-3.

**Not for rotating shafts.**

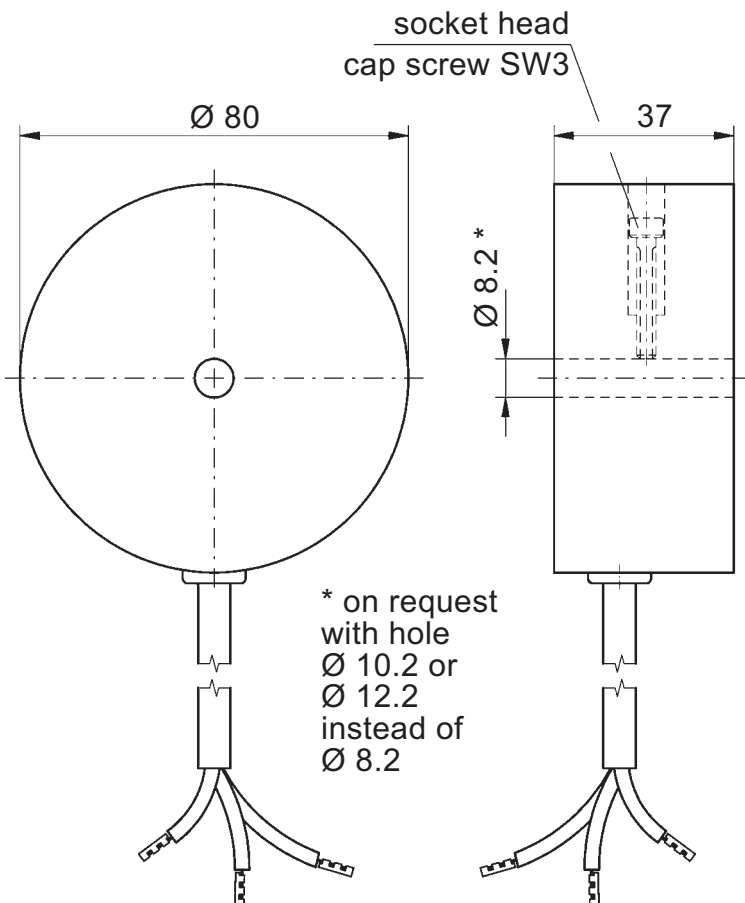
Technical data	RK 3/K/RN	RK 3/K/SIL
<b>Application</b>	<b>standard application</b>	
Switching voltage	between AC/DC 24 V and AC/DC 250 V	
Switching current	between AC 20 mA and AC 3 (1) A or between DC 20 mA and DC 100 mA	
Switching capacity	max. 350 VA	
Operating principle	ball-operated microswitch, potential-free changeover contact	
Housing material	PP and cast resin	
Housing protection class	IP 65	
Connecting cable	A05RN-F 3 x 0.75	silicone 3 x 0.75 other connecting cable on request
Connecting cable length	2 metres, other cable length on request	
Temperature application range	from - 20°C to + 60°C	from - 20°C to + 85°C
Pressure resistance	for pressureless application only	
Mounting instructions	mounting only on a horizontal shaft, which allows a rotation of max. +/- 180°	

### Functional diagram



The switching occurs by rotation to the right, clockwise, when looking at the front-side (rating plate side)

### Dimensional drawing



**The units described in this documentation may only be installed, connected and started up by suitably qualified personnel!**

**Subject to deviations from the diagrams and technical data.**

**The details in this brochure are product specification descriptions and do not constitute assured properties in the legal sense.**