

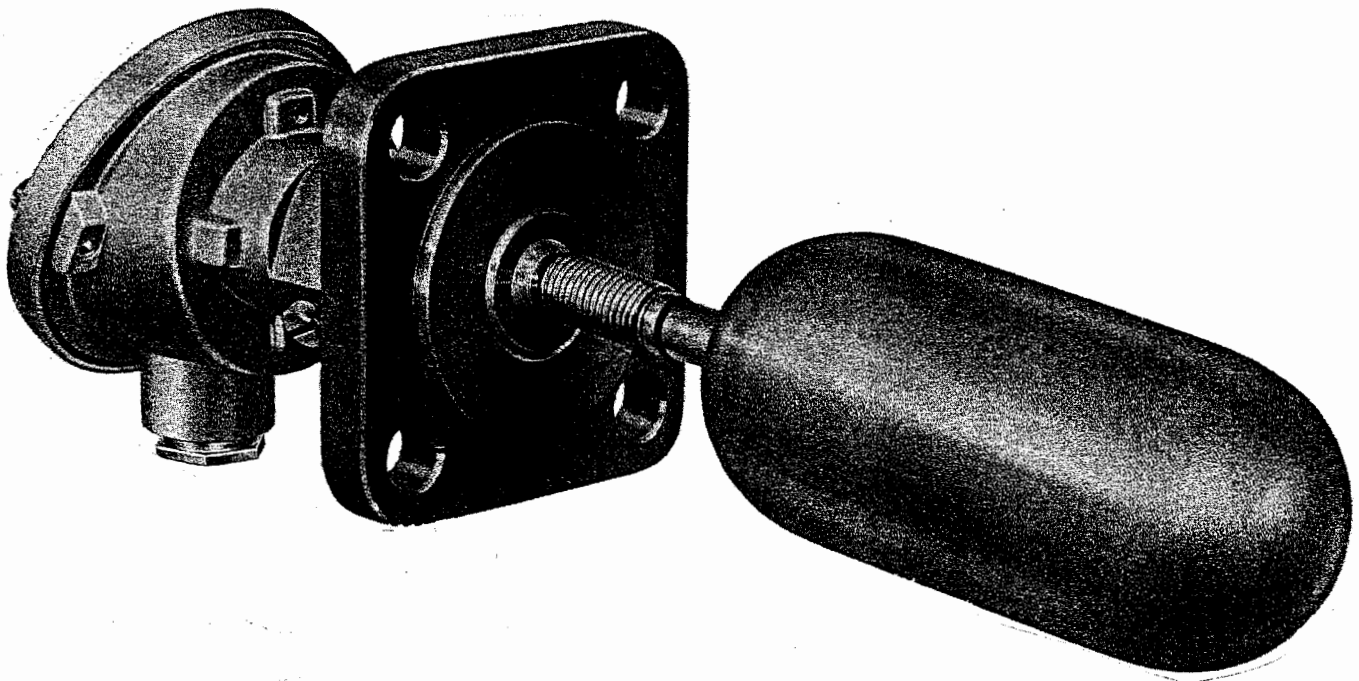
Jola

Float Switch SMG/S.



Germanischer Lloyd

Certificate No. 72 079-76 HH



Mode of operation:

The rising or falling liquid level causes the float to move marginally up or down. When the float rises, it activates a microswitch in the form of a changeover switch.

Jola Spezi­alschal­ter K. Mat­til & Co. KG

Postfach 11 49 · D-67460 Lambrecht (Pfalz) · Telefon: (0 63 25) 1 88 – 01 · Telefax: (0 63 25) 6396
E-Mail: kontakt@jola-info.de · Website: www.jola-info.de

Technical Data

Float material
 Float dimensions
 Extension piece material
 Flange material
 Flange dimensions
 Mounting length from the flange sealing surface (without extension piece)
 Max. mounting length (including extension piece)
 Connection head
 Mounting
 Pressure resistance
 Temperature resistance
 Contact

Type SMG/SE

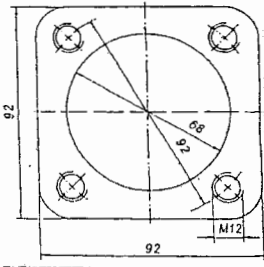
stainless steel 316 Ti or equivalent
 cylindrical float, 63 mm diameter x 140 mm long
 stainless steel 316 Ti or equivalent
 stainless steel 316 Ti | red cast
 square blind flange, 92 x 92 mm

Type SMG/SR

approximately 190 mm
 300 mm
 cast aluminium, with cable entry Pg 16, protection class IP 54
 lateral
 max. 3 bar
 max. + 100°C
 microswitch: change-over contact

	direct current (DC)	alternating current (AC)
Switching voltage	250 V	250 V
Switching current	0,6 A up to 125 V 0,4 A up to 250 V max. 100 W	6,0 A up to 125 V 5,0 A up to 250 V max. 1000 VA
Switching capacity		

Dimensions of counter flange for SMG/S.



Applications

With one switch

With two switches

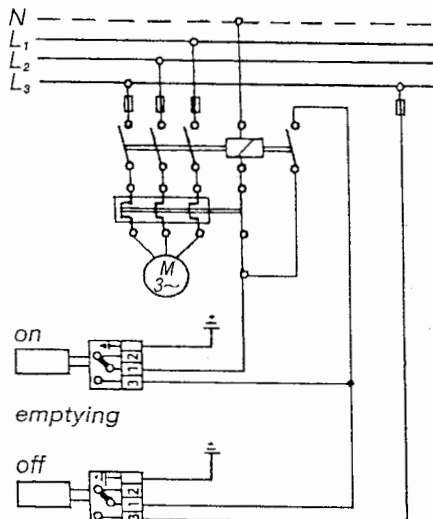
protection against running dry or overflow,
 or indication of "Full" or "Empty" levels.
 automatic control of pump motors or electrovalves
 (see connection diagrams).

Connection diagrams

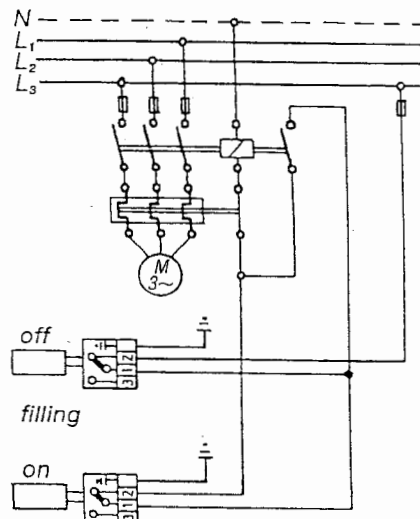
Function of the microswitch in the connection head of the float switch:

Switches over on passage through the horizontal. When the float rises, terminals 1 and 3 connect and open terminals 1 and 2.

connection diagram 1:
 automatic control of a pump motor or an electrovalve -
 switching mode: emptying



connection diagram 2:
 automatic control of a pump motor or an electrovalve -
 switching mode: filling





Type Approval Certificate

Germanischer Lloyd

This is to certify that the undernoted product(s) has/have been tested in accordance with the relevant requirements of the GL Type Approval System.

Certificate No. 72 079 - 76 HH

Company Jola Spezierschalter K. Mattil & Co. KG
Klostergartenstraße 11 - 20
D-67466 Lambrecht

Product Description Magnetic float switch

Type SMG/S.

Environmental Category C

Technical Data /
Range of Application Max. admissible temperature: 100 °C
Max. operational pressure: 3 bar
Max. rod length: 300 mm
Installation: lateral
Square blind flange 92 x 92 mm
Float and bellow material: 1.4571 or equivalent
Contact: micro switch 1 c/o
Contact rating: 250 V, 100 W / 1000 VA

Test Standard Regulations for the Performance of Type Tests

Documents Drawing no.: 222-831; 722-2556

Remarks None

Valid until 2006-11-01

Page 1 of 1

Type Approval Symbol



File No. I.D.03

Hamburg, 2001-09-03

Germanischer Lloyd

H. D. Hespe

I. Klauke

This certificate is issued on the basis of "Regulations for the Performance of Type Tests, Part 0, Procedure".